

Manley Performance Steel Connecting Rods

...Often Copied, But Never Duplicated!!!



Sportsmaster® Series

The perfect rod for stock replacement, mild performance applications; particularly where class rules require a “stock appearing” rod. Aircraft quality 4340 alloy forgings, machined cap and outer beam and ARP cap screws make this Manley rod an ideal choice for many budget conscious racers. Lightweight and affordable.



H-Beam Series

Don't be fooled; not all H-Beams are created equal. Manley H-Beams are not only very “economically” priced, but they are finished to the same exacting tolerances and high quality standards as our Sportsmaster® and Pro Series rods. Final hone size, thread detail, bend and twist - these are attributes we take very seriously. You will find the Manley H-Beam rods superior to others on the market. Available with both ARP 8740 and ARP 2000 bolts.



Pro Series I-Beam

The Manley Pro Series I-Beam rod has become the benchmark for fully machined/billet style high end connecting rods in the performance industry. Multiple weight designs targeting specific markets combined with our finely tuned manufacturing process renders a truly outstanding product.

- ▶ *“NHRA Legal” for Stock and Super Stock*
- ▶ *Tour Lites®, Lightweights, Standard Weights and Heavy Weights*
- ▶ *GM Duramax and Ford Powerstroke Diesel*

A WORD ABOUT HORSEPOWER RATINGS...

You will see that we list “horsepower ratings” for each different series/application of Manley connecting rods. However, it is very important to understand that these “ratings” are somewhat subjective. The critical factors that significantly influence the fatigue life of connecting rods (and the horsepower rating) are RPM, stroke, piston weight and power adders. In certain cases, our horsepower ratings may be conservative. Call our tech line if you are unsure based on your specific application.

STEEL CONNECTING RODS

Small Block Chevrolet

H-Beam & H-Tuff Series Rods

Standard Weight Series

- ▶ Manufactured from 4340 forgings
- ▶ Heat treated, stress relieved, shot peened and 100% magnafluxed
- ▶ Weight matched sets \pm 1.5 grams
- ▶ Cap fasteners are premium 7/16" ARP 8740 or optional ARP 2000 cap screws
- ▶ Flywheel horsepower range for these rods: 725 HP (ARP 8740), 775 HP (ARP 2000) - Oval Track
750 HP (ARP 8740), 900 HP (ARP 2000) - Drag Race
1000 HP (Oval Track), 1200 HP (Drag Race) - H-Tuff



Horsepower range could be exceeded depending upon rpm, stroke, piston weight and power adders

ARP 8740 Part No.	ARP 2000 Part No.	Length	Journal Size	Center-to Center	Big End Bore	Pin Bore	Avg. Gram Weight
H-BEAM							
14050-8	14050R-8	Stock	Large	5.700"	2.225"	.9281"	635
14054-8	14054R-8	.300" Longer	Large	6.000"	2.225"	.9281"	640
14056-8	14056R-8	.425" Longer	Small	6.125"	2.125"	.9281"	650
-----	14057R-8	.425" Longer (.866" Pin)	Small	6.125"	2.125"	.8671"	625
14067-8	14067R-8	.550" Longer	Large	6.250"	2.225"	.9281"	660
H-TUFF							
-----	15056R-8	.425" Longer	Small	6.125"	2.125"	.9281"	665
-----	15057R-8	.425" Longer (.866" Pin)	Small	6.125"	2.125"	.8671"	675

These rods are provided with "Low Profile" cap screws enabling extra block and oil pan clearance on stroker applications.



P/Ns 14050-8 and 14050R-8 are NHRA Legal for Stock & Super Stock



P/Ns 14054-8 and 14054R-8 are NHRA Legal for Olds 307, 350, 403

H-Lite Series

- ▶ Manufactured from 4340 forgings
- ▶ Heat treated, stress relieved, shot peened and 100% magnafluxed
- ▶ Weight matched sets \pm 1.5 grams
- ▶ Cap fasteners are premium 3/8" ARP 2000 cap screws
- ▶ Flywheel horsepower range for these rods is 600+ HP



Horsepower range could be exceeded depending upon rpm, stroke, piston weight and power adders

Part No.	Length	Journal Size	Center-to Center	Big End Bore	Pin Bore	Avg. Gram Weight
14037-8	Stock	Large	5.700"	2.225"	.9281"	585
14034-8	.300" Longer	Large	6.000"	2.225"	.9281"	595

Common Features

Attribute	Dimension
Crankpin Small Journal	2.000"
Crankpin Large Journal	2.100"
Big End Width	.941"
Pin End Width (14050, 14054, 14056, 14067)	1.060"
Pin End Width (14057, 15056, 15057)	.930"

Private brand identification available

Replacement Parts

Part No.	Quantity	Description
42350-4	4 pcs.	3/8" ARP 2000 Cap Screws 1.500" UHL
42354-4	4 pcs.	7/16" ARP 8740 Cap Screws 1.450" UHL
42361-4	4 pcs.	7/16" ARP 8740 Cap Screws 1.600" UHL
42390-4	4 pcs.	7/16" ARP 2000 Cap Screws 1.450" UHL
42249-4	4 pcs.	7/16" ARP 2000 Cap Screws 1.600" UHL
42384-4	4 pcs.	7/16" ARP 2000 Cap Screws 1.650" UHL

Note: New part numbers are **BOLD & ITALICIZED**



STEEL CONNECTING RODS

Small Block Chevrolet

Sportsmaster® Rods

- ▶ Forged from aircraft quality 4340 material
- ▶ Entire beam and cap area is profiled to remove stress raisers and render the lightest possible rod
- ▶ Shot peened after machining to MIL spec and 100% individually magnafluxed
- ▶ Cap fasteners are 3/8" ARP 8740 cap screw
- ▶ Premium Ampco pin bushings
- ▶ Flywheel horsepower range for these rods is 550 HP at 8000 rpm

Horsepower range could be exceeded depending upon rpm, stroke, piston weight and power adders



Part No.	Length	Journal Size	Center-to Center	Big End Bore	Pin Bore	Avg. Gram Weight
14101-8	Stock	Large	5.700"	2.225"	.9281"	565
14101ACHA-8	Stock	Large	5.700"	2.225"	.9281"	600
14104-8	Stock	Large	5.700"	2.225"	.8758"	565
14112-8	Stock	Large	5.700"	2.225"	Press	555
14116-8	.150" Longer	Large	5.850"	2.225"	.9281"	580
14103-8	.300" Longer	Large	6.000"	2.225"	.9281"	570
14106-8	Stock LS / LT1	Large, No Offset	6.100"	2.225"	.9281"	575
14114-8	Stock LS / LT1	Large, No Offset	6.100"	2.225"	.9457"	580
with stock 24mm LS / LT1 wrist pin must use pistons with floating pins						
14113-8	.425" Longer	Large	6.125"	2.225"	.9281"	585
14109-8	Stock	Small	5.700"	2.125"	Press	575
14109A-8	Stock	Small	5.700"	2.125"	Press	575
14105-8	Stock	Small	5.700"	2.125"	.9281"	570
14108-8	Stock	Small	5.700"	2.125"	.8758"	575
14107-8	.300" Longer	Small	6.000"	2.125"	.9281"	580

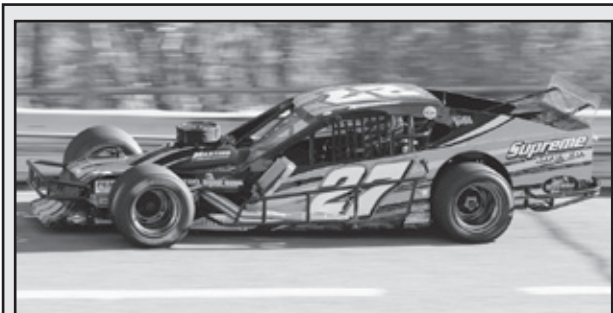
P/N 14106-8 and 14114-8 have no offset on the crank journal, same as the stock LS / LT1 connecting rods

Common Features

Attribute	Dimension
Crankpin Sm. Jnl.	2.000"
Crankpin Lg. Jnl.	2.100"
Big End Width	.940"
Pin End Width	.980"

Replacement Parts

Part No.	Quantity	Description
42383-4	4 pcs.	3/8" ARP 8740 Cap Screws
42310-8	8 pcs.	.927" Ampco Pin Bushings (.990" O.D.)
42366-8	8 pcs.	.927" Ampco Pin Bushings (.997" O.D.)
42308-8	8 pcs.	.875" Ampco Pin Bushings
42385-16	16 pcs.	Dowel Bushings 3/8"



Andrew Krause – Tom Martino Racing Engines
2020 & 2021 Modified Champion
Wall Stadium Speedway



P/Ns 14101-8, 14104-8, 14112-8, 14105-8, 14106-8, 14108-8, 14109-8 and 14114-8 are NHRA Legal for Stock & Super Stock



P/Ns 14101-8, and 14104-8 are legal for Chevy 4.3 V-6
P/N 14103-8 is legal for Olds 307, 350, & 403



P/Ns 14106-8 and 14114-8 are NHRA Legal for Small Block Chevy LS
P/N 14116-8 is NHRA Legal for AMC 390 - 401



P/N 14109A-8 is APBA Legal



P/N 14101ACHA-8 is ACHA / HRL Legal

STEEL CONNECTING RODS

Small Block Chevrolet

NHRA Legal Super Stock

- ▶ Manufactured from 4340 aircraft quality vacuum degassed material
- ▶ Fully machined to produce the lightest and strongest rod possible
- ▶ Shot peened after machining to MIL spec and 100% individually magnafluxed
- ▶ Cap fasteners are 3/8" ARP 2000 cap screws (14359 has 7/16" ARP 2000)
- ▶ Flywheel horsepower range for these rods is 700+ HP



Horsepower range could be exceeded depending upon rpm, stroke, piston weight and power adders

Part No.	Length	Journal Size	Center-to Center	Big End Bore	Pin Bore	Avg. Gram Weight
350 CHEVROLET						
14339-8	Stock 350	Honda	5.700"	2.015"	.8761"	545
14340-8	Stock 350	Honda/IRL	5.700"	2.008"/2.015"	.8671" to .9281"	540
14440-8	Stock 350	Small	5.700"	2.125"	.8761" to .9281"	560
14441-8	Stock 350	Large	5.700"	2.225"	.8761" to .9281"	555
LS CHEVROLET						
14443-8	Stock LS	Honda/IRL	6.100"	2.008"/2.015"	.8671" to .9281"	585
14442-8	Stock LS	Large	6.100"	2.225"	.8761" to .9281"	610
14359-8	.025" Longer LS	Large	6.125"	2.225"	.9281"	615

P/N 14359-8 is for Small Block Chevy LS engines with pistons ready to accept 6.125" length rods. Stock LS rods are 6.100" long. Note the pin bore is .9281". Stock LS pins are .945" diameter. The 14359-8 has no offset on the crank journal, same as the stock LS connecting rods.

P/N's 14340 and 14443 REQUIRE use of one of the connecting rod bearings listed below. To order rods finished to the exact size for Federal Mogul bearings, affix an "F" after the rod part number. For rods finished to exact size for Clevite® bearings, affix a "C" after the rod part number. In addition, you MUST specify which Clevite® bearing will be used.

You must specify the exact final size pin bore desired

Bearing Chart

Bearing Type	Part No.	Big End Bore	Crank Pin
Federal Mogul	7195CH	2.008"	1.8885" Honda
Clevite®	CB1456P	2.008"	1.8885" Honda
Clevite®	CB1663	2.015"	1.8885" Honda
Clevite®	CB1664	2.008"	1.8500" IRL

Common Features

Attribute	Dimension
Crankpin Honda/IRL	1.8885"/1.8500"
Crankpin Sm. Jnl.	2.000"
Crankpin Lg. Jnl.	2.100"
Big End Width	.940"
Pin End Width	1.000"

Replacement Parts

Part No.	Quantity	Description
42350-4	4 pcs.	3/8" ARP 2000 Cap Screws (1.500 UHL)
42351-4	4 pcs.	3/8" ARP 2000 Cap Screws (1.600 UHL)
42390-4	4 pcs.	7/16" ARP 2000 Cap Screws (14359)
42345-8	8 pcs.	Ampco Pin Bushings for .875" pin
42393-8	8 pcs.	Ampco Pin Bushings for .927" pin
42307-8	8 pcs.	Ampco Pin Bushings for 14359
42380-16	16 pcs.	Dowel Bushings 3/8" (14340)
42385-16	16 pcs.	Dowel Bushings 3/8"
42392-16	16 pcs.	Dowel Bushings 7/16" (14359)
40170	1 pc.	Rod Bolt Assembly Lube



Tom Russel's Big Block Stick Shift Stocker

STEEL CONNECTING RODS

Small Block Chevrolet

Tour Lite® I-Beam Rods

4340 Material

- ▶ Forged from 4340 aircraft quality material
- ▶ Fully machined to produce the lightest and strongest rod possible
- ▶ 3/8" ARP 2000, ARP 625+ or 3/8" ARP 3.5 cap screws
- ▶ Shot peened after machining to MIL spec and 100% individually magnafluxed
- ▶ Flywheel horsepower range is 600+ HP

Horsepower range could be exceeded depending upon rpm, stroke, piston weight and power adders



Part No.	Length	Journal Size	Center-to Center	Big End Bore	Avg. Gram Weight
14339-8	Stock 350	Honda	5.700"	2.015"	548
14340-8	Stock Length	Honda / IRL	5.700"	2.008" / 2.015"	540 / 550
14344-8	.300" Longer	Honda / IRL	6.000"	2.008" / 2.015"	540 / 550
14345-8	.425" Longer	Honda / IRL	6.125"	2.008" / 2.015"	545 / 555

P/N's 14340, 14344 and 14345 REQUIRE use of one of the connecting rod bearings listed below. To order rods finished to the exact size for Federal Mogul bearings, affix an "F" after the rod part number. For rods finished to exact size for Clevite® bearings, affix a "C" after the rod part number. In addition, you MUST specify which Clevite® bearing will be used.

Above rods are supplied with 1.600" under head length 3/8" ARP 2000 cap screw fasteners P/N 42351. Upgraded 3/8" ARP Custom Age 625+ cap screws P/N 42321 or 3/8" ARP 3.5 cap screws P/N 42358 are available. To order upgraded fasteners, affix an "R6" for the ARP Custom Age 625+, "RA" for the ARP 3.5 after the rod part number.

Part No.	Length	Journal Size	Center-to Center	Big End Bore	Avg. Gram Weight
14240-8	Stock Length	Small	5.700"	2.125"	525
14242-8	.150" Longer	Small	5.850"	2.125"	525
14244-8	.300" Longer	Small	6.000"	2.125"	535
14245-8	.425" Longer	Small	6.125"	2.125"	530
14140-8	Stock Length	Large	5.700"	2.225"	520
14142-8	.150" Longer	Large	5.850"	2.225"	530
14144-8	.300" Longer	Large	6.000"	2.225"	530
14145-8	.425" Longer	Large	6.125"	2.225"	535

Above rods are supplied with 1.600" under head length 3/8" ARP 2000 cap screw fasteners P/N 42351. Upgraded 3/8" ARP Custom Age 625+ cap screws P/N 42321 or 3/8" ARP 3.5 cap screws P/N 42358 are available. To order upgraded fasteners, affix an "R6" for the ARP Custom Age 625+, "RA" for the ARP 3.5 after the rod part number.

Lengths other than these typical sizes may become popular after publication of this catalog. Please inquire about lengths not listed as we may have subsequently added applications. Also, we can manufacture 40 pieces of these rods at special lengths for no additional charge.

Replacement Parts

Part No.	Quantity	Description
42351-4	4 pcs.	3/8" ARP 2000 Cap Screws
42321-4	4 pcs.	3/8" ARP Custom Age 625+ Cap Screws
42358-4	4 pcs.	3/8" ARP 3.5 Cap Screws
42310-8	8 pcs.	Ampco Pin Bushings .975" long
42393-8	8 pcs.	Ampco Pin Bushings .995" long
42380-16	16 pcs.	Dowel Bushings 3/8" .900" long
42398-16	16 pcs.	Dowel Bushings 3/8" .960" long
40172	1 pc.	Rod Bolt Assembly Lube

Bearing Chart

Bearing Type	Part No.	Big End Bore	Crank Pin
Federal Mogul	7195CH	2.008"	1.8885" Honda
Clevite®	CB1456P	2.008"	1.8885" Honda
Clevite®	CB1663	2.015"	1.8885" Honda
Clevite®	CB1664	2.008"	1.8500" IRL

Common Features

Attribute	Honda / IRL	Small Journal	Large Journal
Crankpin	1.8885" / 1.8500"	2.000"	2.100"
Pin Bore	.9281"	.9281"	.9281"
Big End Width	.940"	.940"	.940"
Pin End Width	1.000"	1.000"	1.000"



P/N 14340 is NHRA Legal for Stock & Super Stock

CONNECTING RODS

STEEL CONNECTING RODS

Small Block Chevrolet

Pro Series I-Beam Rods

- ▶ Forged from 4340 or 300M aircraft quality vacuum degassed material
- ▶ Fully machined to produce the lightest and strongest rod possible
- ▶ Shot peened after machining to MIL spec and 100% individually magnafluxed
- ▶ Cap fasteners are 7/16" ARP 2000 or optional 7/16" ARP Custom Age 625+ cap screws
- ▶ Flywheel horsepower range for the Lightweight rods is 750+ HP - Oval Track, 800+ HP - Drag Race and for the Standard Weight rods is 850+ HP - Oval Track, 1000+ HP - Drag Race, 1500+ HP (14554)



Horsepower range could be exceeded depending upon rpm, stroke, piston weight and power adders

Lightweight

Part No.	Length	Journal Size	Center-to Center	Big End Bore	Avg. Gram Weight
14324-8	.300" Longer	Honda / IRL	6.000"	2.008" / 2.015"	565 / 575
14450-8	Stock	Small	5.700"	2.125"	610
14452-8	.150" Longer	Small	5.850"	2.125"	615
14454-8	.300" Longer	Small	6.000"	2.125"	620
14455-8	.425" Longer	Small	6.125"	2.125"	625
14350-8	Stock	Large	5.700"	2.225"	600
14352-8	.150" Longer	Large	5.850"	2.225"	600
14354-8	.300" Longer	Large	6.000"	2.225"	600
14355-8	.425" Longer	Large	6.125"	2.225"	645

P/N 14324-8 above REQUIRES the use of one of the connecting rod bearings listed below. To order rods finished to the exact size for Federal Mogul bearings, affix an "F" after the rod part number. For rods finished to exact size for Clevite® bearings, affix a "C" after the rod part number. In addition, you MUST specify which Clevite® bearing will be used.

Standard Weight

Part No.	Length	Journal Size	Center-to Center	Big End Bore	Avg. Gram Weight
14254-8	.300" Longer	Small	6.000"	2.125"	670
14255-8	.425" Longer	Small	6.125"	2.125"	675
14152-8	.150" Longer	Large	5.850"	2.225"	670
14154-8	.300" Longer	Large	6.000"	2.225"	665
14554-8	.300" Longer	Large	6.000"	2.225"	700
	Heavier beam for forced induction applications				
14155-8	.425" Longer	Large	6.125"	2.225"	670
14157-8	.550" Longer	Large	6.250"	2.225"	685
	300M ALLOY				
15555-8	.425" Longer	Small	6.125"	2.125"	TBA
	Heavier beam for forced induction applications				

All connecting rods on this page are supplied with 1.450" under head length 7/16" ARP cap screw fasteners P/N 42390. Upgraded 7/16" ARP Custom Age 625+ cap screws P/N 42252 are available. To order upgraded fasteners, affix "R6" after the rod part number.

Bearing Chart

Bearing Type	Part No.	Big End Bore	Crank Pin
Federal Mogul	7195CH	2.008"	1.8885" Honda
Clevite®	CB1456P	2.008"	1.8885" Honda
Clevite®	CB1663	2.015"	1.8885" Honda
Clevite®	CB1664	2.008"	1.8500" IRL

Common Features

Attribute	Honda / IRL	Small Journal	Large Journal
Crankpin	1.8885" / 1.8500"	2.000"	2.100"
Pin Bore	.9281"	.9281"	.9281"
Big End Width	.940"	.940"	.940"
Pin End Width	.980"	.980"	.980"

Replacement Parts

Part No.	Quantity	Description
42390-4	4 pcs.	7/16" ARP 2000 Cap Screws
42252-4	4 pcs.	7/16" ARP Custom Age 625+ Cap Screws
42393-8	8 pcs.	Ampco Pin Bushings (Except 14355)
42307-8	8 pcs.	Ampco Pin Bushings (14355)
42392-16	16 pcs.	Dowel Bushings 7/16"
40170	1 pc.	Rod Bolt Assembly Lube



P/Ns 14350 and 14450-8 are NHRA Legal for Stock & Super Stock
 P/N 14354-8 is NHRA Legal for Olds 307, 350 and 403
 P/Ns 14152, 14352 and 14452 are NHRA Legal for AMC 343 - 390

Note: New part numbers are **BOLD & ITALICIZED**

STEEL CONNECTING RODS

Small Block Chevrolet LS / LT1 Series

H-Lite, H-Beam & H-Tuff Series Rods

- ▶ Manufactured from 4340 forgings
- ▶ Heat treated, stress relieved, shot peened and 100% magnafluxed
- ▶ Weight matched sets \pm 1.5 grams
- ▶ Cap fasteners are premium 3/8" ARP 2000 with the H-Lites, 7/16" ARP 8740 or optional ARP 2000 with the H-Beams and 7/16" ARP 2000 come standard with the H-Tuffs
- ▶ Flywheel horsepower range for these rods: 600+ HP (3/8" ARP 2000), 725 HP (7/16" ARP 8740), 775 HP (7/16" ARP 2000) - Oval Track
750 HP (7/16" ARP 8740), 900 HP (7/16" ARP 2000) - Drag Race
1,000 HP (Oval Track), 1,200+ HP (Drag Race) - H-Tuff

Horsepower range could be exceeded depending upon rpm, stroke, piston weight and power adders



ARP 8740 Part No.	ARP 2000 Part No.	Description	Center-to-Center	Big End Bore	Big End Width	Pin End Width	Pin Bore	Avg. Gram Weight
			H-LITE					
-----	14031-8	LS / LT1 .025" Longer	6.125"	2.225"	.941"	1.060"	.9281"	615
-----	14033-8	LS / LT1 .025" Longer	6.125"	2.225"	.941"	1.060"	.9457"	615
			H-BEAM					
14051-8	14051R-8	LS / LT1 .025" Longer	6.125"	2.225"	.941"	1.060"	.9281"	655
14053-8	14053R-8	LS / LT1 .025" Longer	6.125"	2.225"	.941"	1.060"	.9457"	655
			H-TUFF					
-----	15051R-8	LS / LT1 .025" Longer	6.125"	2.225"	.941"	1.060"	.9281"	680
-----	15053R-8	LS / LT1 .025" Longer	6.125"	2.225"	.941"	1.060"	.9457"	680

P/Ns 14031, 14033, 14051 and 14053, 15051R and 15053R are for Small Block Chevy LS / LT1 engines with pistons ready to accept 6.125" length rods. Stock LS / LT1 rods are 6.100" long. Note the pin bore on the 14031, 14051 and 15051R is .9281". Stock LS / LT1 pins are .945" diameter. These rods are also provided with "Low Profile" cap screws enabling extra block and oil pan clearance on stroker applications.



- Bridges the gap between our standard, proven H-Beams and top of the line, best of the best Pro Series I-Beam rods

- H-Tuff delivers a stronger rod with greater safety margin to handle elevated boost and higher power levels for a modest price premium over standard H-Beams
- H-Tuff design incorporates wider beam and increased cross-sectional thickness in critical areas along with a ribbed pin surround

Small Block Chevrolet LS / LT1 Series

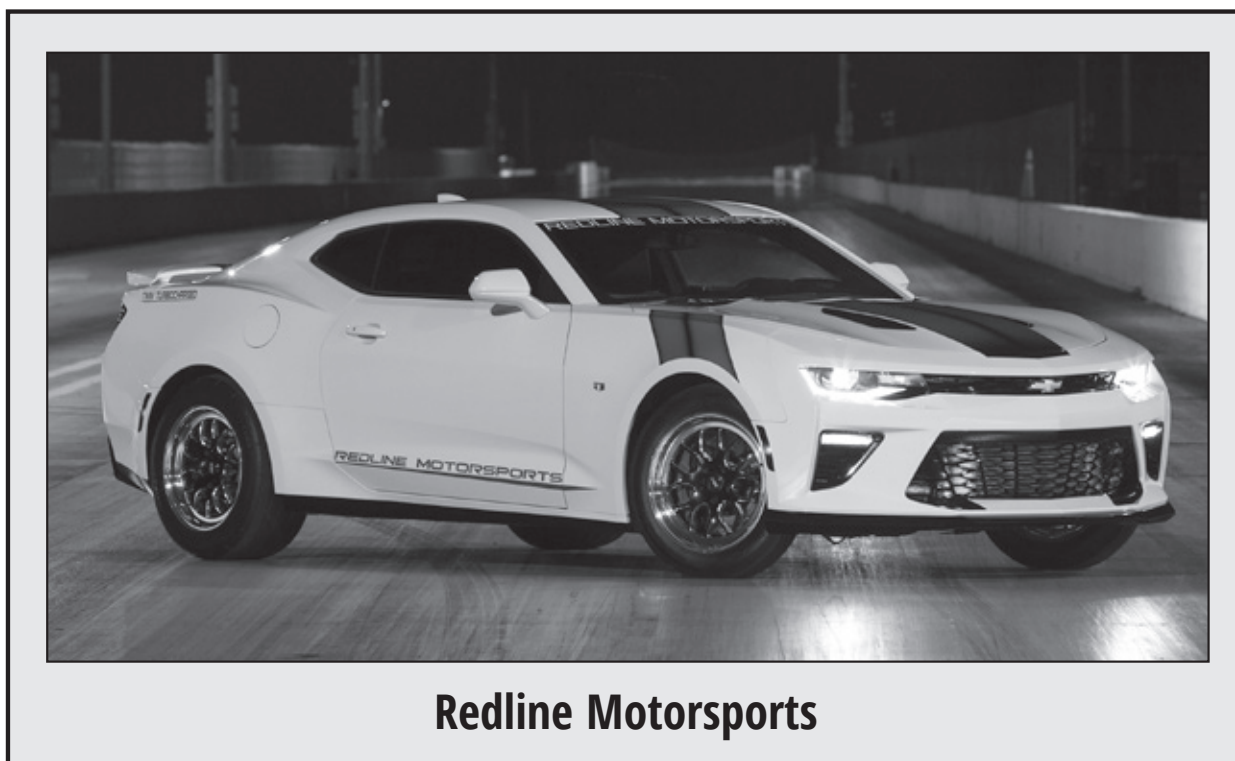
Pro Series I-Beam Rods

- ▶ Forged from 4340 or 300M aircraft quality vacuum degassed material
- ▶ Fully machined to produce the lightest and strongest rod possible
- ▶ Shot peened after machining to MIL spec and 100% individually magnafluxed
- ▶ Cap fasteners are 7/16" ARP 2000 or optional ARP 625+ cap screws
- ▶ Flywheel horsepower range for these rods: 750+ HP Oval Track and 800+ HP Drag Race (14359 only) 850+ HP Oval Track and 1,200+ HP Drag Race (14364, 14365 and 14369 only), 1,200+ HP Oval Track and 1,500+ HP Drag Race (14559 only), and for the 300M rod is 1,500+ HP Oval Track and 1,800+ HP Drag Race



Horsepower range could be exceeded depending upon rpm, stroke, piston weight and power adders

ARP 2000 Part No.	ARP 625+ Part No.	Description	Center-to-Center	Big End Bore	Big End Width	Pin End Width	Pin Bore	Avg. Gram Weight
LIGHTWEIGHT								
14359-8	14359R6-8	LS / LT1 .025" Longer	6.125"	2.225"	.940"	1.000"	.9281"	615
STANDARD WEIGHT								
14159-8	14159R6-8	LS / LT1 .025" Longer	6.125"	2.225"	.940"	1.000"	.9281"	640
14559-8	14559R6-8	LS / LT1 .025" Longer	6.125"	2.225"	.940"	1.000"	.9281"	705
Heavier beam for forced induction applications								
14364-8	14364R6-8	RHS Tall Deck	6.300"	2.225"	.940"	1.000"	.9281"	680
14365-8	14365R6-8	World Warhawk Tall Deck	6.350"	2.225"	.940"	1.000"	.9281"	685
14369-8	14369R6-8	GM LSX Tall Deck	6.460"	2.225"	.940"	1.000"	.9281"	690
300M ALLOY								
15559-8	15559R6-8	LS / LT1 .025" Longer	6.125"	2.225"	.940"	1.000"	.9281"	690
Heavier beam for forced induction applications								



Redline Motorsports



P/N 14365 is NHRA Legal for 2014-2017 350 COPO engines
P/N 14359 is NHRA Legal for Stock & Super Stock

STEEL CONNECTING RODS

Big Block Chevrolet

H-Beam Rods

- ▶ Manufactured from 4340 forgings
- ▶ Heat treated, stress relieved, shot peened and 100% individually magnafluxed
- ▶ Weight matched sets ± 1.5 grams
- ▶ Cap fasteners are premium 7/16" ARP 8740, ARP 2000 or ARP L19
- ▶ Flywheel horsepower range for these rods: 900 HP (ARP 8740), 1200 HP (ARP 2000), 1400 HP (ARP L19) cap screws



Horsepower range could be exceeded depending upon rpm, stroke, piston weight and power adders

ARP 8740 Part No.	ARP 2000 Part No.	ARP L19 Part No.	Description	Center-to-Center	Big End Bore	Crank Pin	Pin Bore	Avg. Gram Weight
14060-8	14060R-8	14060L-8	Stock	6.135"	2.325"	2.200"	.9911"	800
14062-8	14062R-8	14062L-8	.250" Longer	6.385"	2.325"	2.200"	.9911"	810
14066-8	14066R-8	14066L-8	.400" Longer	6.535"	2.325"	2.200"	.9911"	815
14072-8	14072R-8	14072L-8	.565" Longer	6.700"	2.325"	2.200"	.9911"	820
14073-8	14073R-8	14073L-8	.665" Longer	6.800"	2.325"	2.200"	.9911"	825

Common Features

Attribute	Dimension
Big End Width	.991"
Pin End Width	1.125"

Replacement Parts

Part No.	Quantity	Description
42361-4	4 pcs.	7/16" ARP 8740 Cap Screws
42249-4	4 pcs.	7/16" ARP 2000 Cap Screws
42296-4	4 pcs.	7/16" ARP L19 Cap Screws
42327-8	8 pcs.	Pin Bushings
42316-16	16 pcs.	Dowel Bushings



P/N 14060-8 is NHRA Legal for Stock & Super Stock



"I have used Manley H-Beam rods for years and they have proven to be a reliable choice."

- David Reher

We've been so impressed with the strength and durability that Manley rods provide we made them standard in our "Pro Series" engine lineup. I recommend Manley "M-Power" cranks and rods to anyone looking for additional strength at an exceptional value!!

- Scott Shafiroff



Big Block Chevrolet

Pro Series I-Beam Rods

- ▶ Forged from 4340 aircraft quality vacuum degassed material
- ▶ Fully machined to produce the lightest and strongest rod possible
- ▶ Shot peened after machining to MIL spec and 100% individually magnafluxed
- ▶ Cap fasteners are 7/16" ARP 2000 cap screws
- ▶ Flywheel horsepower range for these rods is listed in the box below

Horsepower range could be exceeded depending upon rpm, stroke, piston weight and power adders

ARP 2000 Part No.	ARP L19 Part No.	Description	Center-to-Center	Big End Bore	Crank Pin	Pin Bore	Avg. Gram Weight	Horsepower Oval Track	Horsepower Drag Race
14160-8	14160L-8	Stock Length	6.135"	2.325"	2.200"	.9911"	810	1,000	1,600+
14162-8	14162L-8	.250" Longer	6.385"	2.325"	2.200"	.9911"	825	1,000	1,600+
14166-8	14166L-8	.400" Longer	6.535"	2.325"	2.200"	.9911"	835	1,000	1,600+
14167-8	14167L-8	.400" Longer Marine Duty	6.535"	2.325"	2.200"	.9911"	875	1,000	1,600+
14168-8	14168L-8	.500" Longer	6.635"	2.325"	2.200"	.9911"	840	1,000	1,600+
14170-8	14170L-8	.525" Longer	6.660"	2.325"	2.200"	.9911"	845	1,000	1,600+
14172-8	14172L-8	.565" Longer	6.700"	2.325"	2.200"	.9911"	845	1,000	1,600+
14175-8	14175L-8	.615" Longer	6.750"	2.325"	2.200"	.9911"	850	1,000	1,600+
14173-8	14173L-8	.665" Longer	6.800"	2.325"	2.200"	.9911"	860	1,000	1,600+

ARP 2000 Part No.	ARP 625+ Part No.	Description	Center-to-Center	Big End Bore	Crank Pin	Pin Bore	Avg. Gram Weight	Horsepower Oval Track	Horsepower Drag Race
14266-8	14266R6-8	.400" Longer w/ SBC Lg. Jnl. Big End	6.535"	2.225"	2.100"	.9911"	745	850	1,000



P/N 14160-8 is NHRA Legal for Stock & Super Stock
 P/N 14168-8 is NHRA Legal for Ford 429, 460
 P/N 14168-8 is NHRA Legal for Pontiac 350-455

Common Features

Attribute	Dimension
Big End Width	.990"
Pin End Width	1.125"

Replacement Parts

Part No.	Quantity	Description
42384-4	4 pcs.	7/16" ARP 2000 Cap Screws (All except 14266)
42296-4	4 pcs.	7/16" ARP L19 Cap Screws (All except 14266)
42390-4	4 pcs.	7/16" ARP 2000 Cap Screws (14266)
42252-4	4 pcs.	7/16" ARP Custom Age 625+ Cap Screws (14266R6)
42327-8	8 pcs.	Ampco Pin Bushings
42392-16	16 pcs.	Dowel Bushings
40170	1 pc.	Rod Bolt Assembly Lube



STEEL CONNECTING RODS

Chrysler 5.7L /6.1L /6.2L /6.4L Hemi

H-Beam & H-Tuff Series Rods

- ▶ Manufactured from 4340 forgings
- ▶ Heat treated, stress relieved, shot peened and 100% magnafluxed
- ▶ Weight matched sets ± 1.5 grams
- ▶ Cap fasteners are premium 7/16" ARP 8740 or optional ARP 2000 cap screws
- ▶ Flywheel horsepower range for these rods: 725 HP (ARP 8740), 775 HP (ARP 2000) - Oval Track
750 HP (ARP 8740), 900 HP (ARP 2000) - Drag Race
1,000 HP (Oval Track), 1,200+ HP (Drag Race) - H-Tuff



Horsepower range could be exceeded depending upon rpm, stroke, piston weight and power adders

ARP 8740 Part No.	ARP 2000 Part No.	Description	Center-to-Center	Big End Bore	Big End Width	Pin End Width	Pin Bore	Avg. Gram Weight
H-BEAM								
14085-8	14085R-8	5.7/6.1L Stock Length w/ SB Chevy .927" pin	6.240"	2.252"	.933"	1.000"	.9281"	670
14086-8	14086R-8	5.7L Stock Length w/ 24mm pin	6.240"	2.252"	.933"	1.000"	.9457"	675
14087-8	14087R-8	6.1L Stock Length w/ 25mm pin	6.240"	2.252"	.933"	1.000"	.9848"	665
14088-8	14088R-8	6.2/6.4L Stock Length w/ SB Chevy .927" pin	6.200"	2.252"	.933"	1.000"	.9281"	665
14089-8	14089R-8	6.2/6.4L Stock Length w/ 24mm pin	6.200"	2.252"	.933"	1.000"	.9457"	670
14056-8	14056R-8	5.7/6.1L/6.4L Stroker w/ SB Chevy 2.000" crank journal and .927" pin	6.125"	2.125"	.941"	1.060"	.9281"	650
-----	14057R-8	5.7/6.1L/6.4L Stroker w/ SB Chevy 2.000" crank journal and .866" pin	6.125"	2.125"	.941"	.930"	.8671"	620
H-TUFF								
-----	15088R-8	6.2/6.4L Stock Length w/ SB Chevy .927" Pin	6.200"	2.252"	.933"	1.000"	.9281"	705
-----	15089R-8	6.2/6.4L Stock Length w/ 24mm Pin	6.200"	2.252"	.933"	1.000"	.9457"	710
-----	15056R-8	5.7/6.1/6.4L Stroker w/ SB Chevy 2.000" crank journal and .927" Pin	6.125"	2.125"	.941"	.930"	.9281"	665
-----	15057R-8	5.7/6.1/6.4L Stroker w/ SB Chevy 2.000" crank journal and .866" Pin	6.125"	2.125"	.941"	.930"	.8671"	675

Replacement Parts

Part No.	Quantity	Description
42354-4	4 pcs.	7/16" ARP 8740 Cap Screws
42390-4	4 pcs.	7/16" ARP 2000 Cap Screws
42244-8	8 pcs.	Ampco Pin Bushings (14057/15057R)
42393-8	8 pcs.	Ampco Pin Bushings (.927" and 24mm pins)



P/N 14089-8 is NHRA Legal for Stock
P/Ns 14088-8 & 14089-8 are NHRA Legal for Super Stock



- Bridges the gap between our standard, proven H-Beams and top of the line, best of the best Pro Series I-Beam rods
- H-Tuff delivers a stronger rod with greater safety margin to handle elevated boost and higher power levels for a modest price premium over standard H-Beams
- H-Tuff design incorporates wider beam and increased cross-sectional thickness in critical areas along with a ribbed pin surround

STEEL CONNECTING RODS

Chrysler 5.7L /6.1L /6.2L /6.4L Hemi

Pro Series I-Beam Rods

- ▶ Forged from 4340 or 300M aircraft quality vacuum degassed material
- ▶ Fully machined to produce the lightest and strongest rod possible
- ▶ Shot peened after machining to MIL spec and 100% individually magnafluxed
- ▶ Cap fasteners are 7/16" ARP 2000 or optional 7/16" ARP Custom Age 625+ cap screws
- ▶ Flywheel horsepower range for the Lightweight rods is 750+ HP - Oval Track, 800+ HP - Drag Race, for the Standard Weight rod is 900+ HP - Oval Track, 1200+ HP - Drag Race, and for the 300M rod is 1000+ HP - Oval track, 1300+ HP - Drag Race



Horsepower range could be exceeded depending upon rpm, stroke, piston weight and power adders

Note: For part numbers 14460-8 and 14560-8 please specify the wrist pin diameter you intend to run when placing your order. The stock 5.7 HEMI uses a 24mm/.945" wrist pin and the 6.1 HEMI uses a 25mm/.984" wrist pin from the factory. The pistons you are using must have floating pins with a diameter of .927", 24mm/.945", or 25mm/.984".

Part No.	Description	Center-to-Center	Big End Bore	Crank Pin	Big End Width	Pin End Width	Pin Bore	Avg. Gram Weight
LIGHTWEIGHT								
14460-8	5.7/6.1L Stock Length	6.240"	2.252"	2.126"	.933"	1.000"	.9281", .9457" or .9848"	595
14455-8	5.7/6.1L/6.4L Stroker w/ SB Chevy 2.000" crank journal and .927" pin	6.125"	2.125"	2.000"	.940"	1.000"	.9281"	625
14461-8	392 Hemi Drag Pak Crate Engine w/ SB Chevy 2.100" crank journal and .927" pin	6.200"	2.225"	2.100"	.940"	1.000"	.9281"	610
14354-8	426 Hemi Drag Pak Crate Engine w/ SB Chevy 2.100" crank journal and .927" pin	6.000"	2.225"	2.100"	.940"	1.000"	.9281"	600
STANDARD WEIGHT								
14562-8	6.2/6.4L Stock Length Heavier beam for forced induction applications	6.200"	2.252"	2.126"	.933"	1.000"	.9281", .9457" or .9848"	685
14560-8	5.7/6.1L Stock Length Heavier beam for forced induction applications	6.240"	2.252"	2.126"	.933"	1.000"	.9281", .9457" or .9848"	700
14255-8	5.7/6.1L/6.4L Stroker w/ SB Chevy 2.000" crank journal and .927" pin	6.125"	2.125"	2.000"	.940"	1.000"	.9281"	675
14554-8	426 Hemi Drag Pak Crate Engine w/ SB Chevy 2.100" crank journal and .927" pin Heavier beam for forced induction applications	6.000"	2.225"	2.100"	.940"	1.000"	.9281"	700
300M ALLOY								
15555-8	5.7/6.1L/6.4L Stroker w/ SB Chevy 2.000" crank journal and .927" pin	6.125"	2.125"	2.000"	.940"	.950"	.9281"	660

The above connecting rods are supplied with 1.450" under head length 7/16" ARP 2000 cap screw fasteners P/N 42390. Upgraded 7/16" ARP Custom Age 625+ cap screws P/N 42252 are available. To order upgraded fasteners, affix "R6" after the rod part number.



P/Ns 14354-8, 14460-8, & 14461-8 are NHRA Legal for Stock & Super Stock

Replacement Parts

Part No.	Quantity	Description
42390-4	4 pcs.	7/16" ARP 2000 Cap Screws
42252-4	4 pcs.	7/16" ARP Custom Age 625+ Cap Screws
42307-8	8 pcs.	Ampco Pin Bushings (14562)
42393-8	8 pcs.	Ampco Pin Bushings (14255, 14354, 14455, 14460, 14461, 14554, 14560)
42395-8	8 pcs.	Ampco Pin Bushings (15555)
42352-16	16 pcs.	Dowel Bushings 7/16" (14354, 14455, 14554, 14562)
42392-16	16 pcs.	Dowel Bushings 7/16" (14255, 14460, 14461, 14560, 15555)
40170	1 pc.	Rod Bolt Assembly Lube



Arrington Performance

STEEL CONNECTING RODS

Dodge 8.3L / 8.4L Viper V10

H-Beam Rods

- ▶ Manufactured from 4340 forgings
- ▶ Heat treated, stress relieved, shot peened and 100% magnafluxed
- ▶ Weight matched sets ± 1.5 grams
- ▶ Cap fasteners are premium 7/16" ARP 8740 or optional ARP 2000 cap screws
- ▶ Flywheel horsepower range for these rods: 725 HP (ARP 8740), 775 HP (ARP 2000) - Oval Track
750 HP (ARP 8740), 900 HP (ARP 2000) - Drag Race

Horsepower range could be exceeded depending upon rpm, stroke, piston weight and power adders



ARP 8740 Part No.	ARP 2000 Part No.	Description	Center-to Center	Big End Bore	Big End Width	Pin End Width	Pin Bore	Avg. Gram Weight
14083-10	14083R-10	8.3/8.4L Viper V10 Stock Length (Must use Clevite CB1808P rod bearing)	6.240"	2.252"	.933"	1.000"	.9281", .9457" or .9848"	670

For P/N 14083 please specify the wrist pin diameter you intend to run when placing your order.

Replacement Parts

Part No.	Quantity	Description
42354-4	4 pcs.	7/16" ARP 8740 Cap Screws
42390-4	4 pcs.	7/16" ARP 2000 Cap Screws
42393-8	8 pcs.	Ampco Pin Bushings

Pro Series I-Beam Rods

- ▶ Flywheel horsepower range for the Lightweight rods is 950+ - Oval Track, 1000+ HP Drag Race and for the Standard Weight rod is 1100+ HP - Oval Track, 1400+ HP - Drag Race

Horsepower range could be exceeded depending upon rpm, stroke, piston weight and power adders

Note: For part numbers 14463-10 and 14563-10 please specify the wrist pin diameter you intend to run when placing your order.



Part No.	Description	Center-to Center	Big End Bore	Crank Pin	Big End Width	Pin End Width	Pin Bore	Avg. Gram Weight
14463-10	8.3/8.4L Stock Length (Must use Clevite CB1808P rod bearing)	6.240"	LIGHTWEIGHT 2.252"	2.126"	.933"	1.000"	.9281", .9457" or .9848"	595
14563-10	8.3/8.4L Stock Length Heavier beam for forced induction applications (Must use Clevite CB1808P rod bearing)	6.240"	STANDARD WEIGHT 2.252"	2.126"	.933"	1.000"	.9281", .9457" or .9848"	700

The above connecting rods are supplied with 1.450" under head length 7/16" ARP 2000 cap screw fasteners P/N 42390. Upgraded 7/16" ARP Custom AGE 625+ cap screws P/N 42252 are available. To order upgraded fasteners, affix "R6" after the rod part number.

Replacement Parts

Part No.	Quantity	Description
42390-4	4 pcs.	7/16" ARP 2000 Cap Screws
42252-4	4 pcs.	7/16" ARP Custom Age 625+ Cap Screws
42307-8	8 pcs.	Ampco Pin Bushings (25mm pin)
42393-8	8 pcs.	Ampco Pin Bushings (.927", 24mm pin)
42392-16	16 pcs.	Dowel Bushings 7/16"
40170	1 pc.	Rod Bolt Assembly Lube

CONNECTING RODS

STEEL CONNECTING RODS

Chrysler 360

Sportsmaster® Rods & NHRA Legal Stock & Super Stock Pro Series I-Beam Rods



Sportsmaster®

Pro Series I-Beam

- ▶ Forged from aircraft quality 4340 material
- ▶ Entire Sportsmaster® beam is profiled to remove stress risers and render the lightest possible rod
- ▶ Shot peened after machining to MIL spec and 100% individually magnafluxed
- ▶ Cap fasteners for 14139C-8 are 3/8" ARP 8740 cap screws
- ▶ Cap fasteners for 14445-8 are 3/8" ARP 2000 cap screws
- ▶ Premium Ampco pin bushings
- ▶ Flywheel horsepower range for 14139C-8 rods is 550 HP
- ▶ Flywheel horsepower range for 14445-8 rods is 700+ HP

Horsepower range could be exceeded depending upon rpm, stroke, piston weight and power adders

Part No.	Center-to-Center	Big End Bore	Big End Width	Crank Pin	Pin End Width	Pin Bore	Avg. Gram Weight
SPORTSMASTER® RODS							
14139C-8	6.125"	2.250"	.933"	2.125"	1.000"	.9848"	555
PRO SERIES I-BEAM RODS							
14445-8	6.125"	2.250"	.933"	2.125"	1.000"	.8761" to .9848"	670

You must specify the exact final size pin bore desired



P/N 14445-8 is NHRA Legal for Stock & Super Stock

Chrysler 426

Pro Series I-Beam Rods



- ▶ Forged from 4340 aircraft quality vacuum degassed material
- ▶ Fully machined to produce the lightest and strongest rod possible
- ▶ Shot peened after machining to MIL spec and 100% individually magnafluxed
- ▶ Cap fasteners are 7/16" ARP 2000 cap screws
- ▶ Flywheel horsepower range for these rods is 1000+ HP

Horsepower range could be exceeded depending upon rpm, stroke, piston weight and power adders

Part No.	Description	Center-to-Center	Big End Bore	Pin Bore	Avg. Gram Weight
14177-8	Stock Length w/ 1.031" pin	6.865"	2.500"	1.0321"	915
14185-8	.235" Longer w/ .990" pin	7.100"	2.500"	.9911"	955
14187-8	.235" Longer w/ .990" pin and BB Chevy rod journal	7.100"	2.325"	.9911"	955

The Big Block Chrysler I-Beam rods listed above can be fitted with ARP Custom Age 625+ bolts P/N 42397. To order these rods with upgraded bolts, affix an "R6" to the part number.

Common Features

Attribute	Dimension
Big End Width	1.015"
Pin End Width	1.180"



P/N 14177-8 is NHRA Legal for Stock & Super Stock

Replacement Parts

Part No.	Quantity	Description
42383-4	4 pcs.	3/8" ARP 8740 Cap Screws (14139C)
42350-4	4 pcs.	3/8" ARP 2000 Cap Screws (14445)
42391-4	4 pcs.	7/16" ARP 2000 Cap Screws
42397-4	4 pcs.	7/16" ARP Custom Age 625+ Cap Screws
42307-8	8 pcs.	Ampco Pin Bushings (14139C)
42268-8	8 pcs.	Ampco Pin Bushings (14445)
42305-8	8 pcs.	Ampco Pin Bushings for .990" pin
42388-8	8 pcs.	Ampco Pin Bushings for 1.031" pin
42385-16	16 pcs.	Dowel Bushings 3/8" (14139C, 14445)
42387-16	16 pcs.	Dowel Bushings 7/16" (14177, 14185)
42392-16	16 pcs.	Dowel Bushings 7/16" (14187)
40170	1 pc.	Rod Bolt Assembly Lube

STEEL CONNECTING RODS

Ford 2.3L (non-EcoBoost)

Sportsmaster® Rods
Esslinger Type



Part No.	Description	Center-to-Center	Big End Bore	Big End Width	Pin End Width	Pin Bore	Avg. Gram Weight
14117-4	Modified Ford 2.3L Esslinger type w/ .927" pin	5.700"	2.172"	.990"	.980"	.9281"	600

Replacement Parts

Part No.	Quantity	Description
42383-4	4 pcs.	3/8" ARP 8740 Cap Screws
42310-8	8 pcs.	Ampco Pin Bushings
42385-16	16 pcs.	Dowel Bushings 3/8"

Ford 351W

Pro Series I-Beam Rods



Part No.	Description	Center-to-Center	Big End Bore	Crank Pin	Big End Width	Pin End Width	Pin Bore	Avg. Gram Weight
14354C-8	351W Ford Pro Series I-Beam - Lightweight with standard width SB Chevy bearing	6.000"	2.225"	2.100"	.940"	1.000"	.9131"	605

Replacement Parts

Part No.	Quantity	Description
42390-4	4 pcs.	7/16" ARP 2000 Cap Screws
42345-8	8 pcs.	Ampco Pin Bushings
42392-16	16 pcs.	Dowel Bushings 7/16"
40170	1 pc.	Rod Bolt Assembly Lube

Ford 429

Pro Series I-Beam Rods
6.800" Center-To-Center



Part No.	Description	Center-to-Center	Big End Bore	Big End Width	Pin End Width	Pin Bore	Avg. Gram Weight
14173-8	Ford 429	6.800"	2.325"	.990"	1.125"	.9911"	860

Replacement Parts

Part No.	Quantity	Description
42391-4	4 pcs.	7/16" ARP 2000 Cap Screws
42327-8	8 pcs.	Ampco Pin Bushings
42387-16	16 pcs.	Dowel Bushings 7/16"
40170	1 pc.	Rod Bolt Assembly Lube

STEEL CONNECTING RODS

Ford 2.3L DOHC "EcoBoost" Ford 3.5L DOHC "EcoBoost" V-6 Ford 3.7L DOHC "Cyclone" V-6

H-Beam Rods

- ▶ Manufactured from 4340 forgings
- ▶ Heat treated, stress relieved, shot peened and 100% magnafluxed
- ▶ Weight matched sets ± 1.5 grams
- ▶ Cap fasteners are 3/8" ARP 2000 (2.3L) and 7/16" ARP 8740 or optional ARP 2000 (3.5/3.7L) cap screws
- ▶ Horsepower range for these rods is 600+ HP (2.3L) and 700+ HP (ARP 8740), 750+ HP (ARP 2000) for 3.5L and 3.7L



Horsepower range could be exceeded depending upon rpm, stroke, piston weight and power adders

ARP 8740 Part No.	ARP 2000 Part No.	Description	Center-to-Center	Big End Bore	Big End Width	Pin End Width	Pin Bore	Avg. Gram Weight
-----	14081-4	Stock Length w/ 22.5mm pin	5.875"	2.167"	.860"	.859"	.8868"	585
			FORD 2.3L ECOBOOST					
14082-6	14082R-6	Stock Length w/ 23mm pin	6.011"	2.357"	.855"	.855"	.9063"	690
			FORD 3.5L ECOBOOST/3.7L CYCLONE					

Replacement Parts

Part No.	Quantity	Description
42350-4	4 pcs.	3/8" ARP 2000 Cap Screws (14081)
42354-4	4 pcs.	7/16" ARP 8740 Cap Screws (14082)
42390-4	4 pcs.	7/16" ARP 2000 Cap Screws (14082R)
42052-4	4 pcs.	Ampco Pin Bushings (14081)
42053-6	6 pcs.	Ampco Pin Bushings (14082/14082R)
42048-8	8 pcs.	Dowel Bushings 3/8" (14081)
42049-12	12 pcs.	Dowel Bushings 7/16" (14082/14082R)

Pro Series I-Beam Rods

Standard Weight

- ▶ Forged from 4340 aircraft quality vacuum degassed material
- ▶ Fully machined to produce the lightest and strongest rod possible
- ▶ Shot peened after machining to MIL spec and 100% magnafluxed
- ▶ Cap fasteners are 3/8" ARP 2000 (2.3L) and 7/16" ARP 2000 (3.5/3.7L) or optional ARP 625+ cap screws
- ▶ Horsepower range for these 2.3L rods is 1,000+ HP (ARP 2000), 1,200+ HP (ARP 625+) and for the 3.5/3.7L is 1,200+ (ARP 2000), 1,400+ (ARP 625+)



Horsepower range could be exceeded depending upon rpm, stroke, piston weight and power adders

ARP 2000 Part No.	ARP 625+ Part No.	Description	Center-to-Center	Big End Bore	Big End Width	Pin End Width	Pin Bore	Avg. Gram Weight
14434-4	14434R6-4	Stock Length w/ 22.5mm pin Heavier beam for forced induction applications	5.875"	2.167"	.860"	.860"	.8868"	605
			FORD 2.3L ECOBOOST					
14523-6	14523R6-6	Stock Length w/ 23mm pin Heavier beam for forced induction applications	6.011"	2.357"	.855"	.855"	.9063"	620
			FORD 3.5L ECOBOOST/3.7L CYCLONE					

Replacement Parts

Part No.	Quantity	Description
42350-4	4 pcs.	3/8" ARP 2000 Cap Screws (14434)
42320-4	4 pcs.	3/8" ARP 625+ Cap Screws (14434R6)
42390-4	4 pcs.	7/16" ARP 2000 Cap Screws (14523)
42252-4	4 pcs.	7/16" ARP 625+ Cap Screws (14523R6)
42052-4	4 pcs.	Ampco Pin Bushings (14434/14434R6)
42053-6	6 pcs.	Ampco Pin Bushings (14523/14523R6)
42382-12	12 pcs.	Dowel Bushings 3/8" (14434/14434R6)
42352-12	12 pcs.	Dowel Bushings 7/16" (14523/14523R6)
40170	1 pc.	Rod Bolt Assembly Lube

STEEL CONNECTING RODS

Ford 4.6L Modular V-8

H-Beam & H-Tuff Series Rods

- ▶ Manufactured from 4340 forgings
- ▶ Heat treated, stress relieved, shot peened and 100% magnafluxed
- ▶ Weight matched sets ± 1.5 grams
- ▶ Cap fasteners are 3/8" ARP 8740 or optional ARP 2000 with the H-Beams and 3/8" ARP 2000 come standard with the H-Tuff
- ▶ Flywheel horsepower range for these rods is 700 HP (ARP 8740), 750+ HP (ARP 2000) for the H-Beams and 1,000+ HP for the H-Tuff



Horsepower range could be exceeded depending upon rpm, stroke, piston weight and power adders

ARP 8740 Part No.	ARP 2000 Part No.	Description	Center-to-Center	Big End Bore	Big End Width	Pin End Width	Pin Bore	Avg. Gram Weight
14042-8	14042R-8	4.6 L Stock Length w/ 22mm pin	H-BEAM 5.933"	2.239"	.940"	.940"	.8671"	615
14044-8	14044R-8	4.6 L Stroker w/ 22mm pin and a 2.000" crank journal	5.850"	2.125"	.940"	.940"	.8671"	605
-----	15042R-8*	4.6 L Stock Length w/ 22mm pin	H-TUFF 5.933"	2.239"	.940"	.940"	.8671"	685

Private brand identification available

Replacement Parts

Part No.	Quantity	Description
42383-4	4 pcs.	3/8" ARP 8740 Cap Screws
42350-4	4 pcs.	3/8" ARP 2000 Cap Screws
42302-8	8 pcs.	Ampco Pin Bushings
42260-8	8 pcs.	Ampco Pin Bushings (14044)
42274-16	16 pcs.	Dowel Bushings 3/8"



Manley Performance was the exclusive connecting rod supplier for the 2003 / 2004 Ford SVT Mustang Cobra



P/Ns 14042-8 and 14042R-8 are NHRA Legal for Stock & Super Stock

CONNECTING RODS



- Bridges the gap between our standard, proven H-Beams and top of the line, best of the best Pro Series I-Beam rods
- H-Tuff delivers a stronger rod with greater safety margin to handle elevated boost and higher power levels for a modest price premium over standard H-Beams
- H-Tuff design incorporates wider beam and increased cross-sectional thickness in critical areas along with a ribbed pin surround

Ford 4.6L Modular V-8

Pro Series I-Beam Rods

- ▶ Forged from 4340 or 300M aircraft quality vacuum degassed material
- ▶ Fully machined to produce the lightest and strongest rod possible
- ▶ Shot peened after machining to MIL spec and 100% individually magnafluxed
- ▶ Cap fasteners are 7/16" ARP 2000 or optional ARP 625+ cap screws
- ▶ Flywheel horsepower range for the Lightweight rods is 750+ HP - Oval Track, 800+ HP - Drag Race, for the Standard Weight rod is 900+ HP - Oval Track, 1200+ HP - Drag Race, and for the 300M rod is 900+ HP - Oval track, 1200+ HP - Drag Race



Horsepower range could be exceeded depending upon rpm, stroke, piston weight and power adders

ARP 2000 Part No.	ARP 625+ Part No.	Description	Center-to-Center	Big End Bore	Big End Width	Pin End Width	Pin Bore	Avg. Gram Weight
LIGHTWEIGHT								
14318-8	-----	Stock Length w/ 22mm pin	5.933"	2.239"	.940"	.940"	.8671"	595
14320-8	-----	4.6 L Stroker w/ 22mm pin and a 2.000" crank journal	5.850"	2.125"	.940"	.940"	.8671"	605
STANDARD WEIGHT								
14518-8	14518R6-8	Stock Length w/ 22mm pin Heavier beam for forced induction applications	5.933"	2.239"	.940"	.940"	.8671"	675
14520-8	14520R6-8	4.6 L Stroker w/ 22mm pin and a 2.000" crank journal Heavier beam for forced induction applications	5.850"	2.125"	.940"	.940"	.8671"	690
300M ALLOY								
15318-8	15318R6-8	Stock Length w/ 22mm pin	5.933"	2.239"	.940"	.940"	.8671"	695
15320-8	15320R6-8	4.6 L Stroker w/ 22mm pin and a 2.000" crank journal	5.850"	2.125"	.940"	.940"	.8671"	675
15323-8	15323R6-8	4.6 L Stroker w/ 22mm pin	5.850"	2.239"	.940"	.940"	.8671"	680

Replacement Parts

Part No.	Quantity	Description
42390-4	4 pcs.	7/16" ARP 2000 Cap Screws
42252-4	4 pcs.	7/16" ARP 625+ Cap Screws
42302-8	8 pcs.	Ampco Pin Bushings
42392-16	16 pcs.	Dowel Bushings 7/16"
40170	1 pc.	Rod Bolt Assembly Lube



P/N 14318-8 is NHRA Legal for Stock & Super Stock



Modular Mustang Racing

Note: New part numbers are **BOLD & ITALICIZED**

STEEL CONNECTING RODS

Ford 5.4L Modular V-8/5.8L GT-500

H-Beam Rods

- ▶ Manufactured from 4340 forgings
- ▶ Heat treated, stress relieved, shot peened and 100% magnafluxed
- ▶ Weight matched sets ± 1.5 grams
- ▶ Cap fasteners are 3/8" ARP 8740 or optional ARP 2000 cap screws
- ▶ Flywheel horsepower range for these rods is 700 HP (ARP 8740), 750+ HP (ARP 2000)



Horsepower range could be exceeded depending upon rpm, stroke, piston weight and power adders

ARP 8740 Part No.	ARP 2000 Part No.	Description	Center-to-Center	Big End Bore	Big End Width	Pin Bore	Avg. Gram Weight
14040-8	14040R-8	5.4 L Stock Length w/ 22mm pin	6.657"	2.239"	.940"	.8671"	645

P/N 14040 will also work for the 6.8L V10 modular
Private brand identification available

Replacement Parts

Part No.	Quantity	Description
42383-4	4 pcs.	3/8" ARP 8740 Cap Screws
42350-4	4 pcs.	3/8" ARP 2000 Cap Screws
42302-8	8 pcs.	Ampco Pin Bushings
42274-16	16 pcs.	Dowel Bushings 3/8"



P/Ns 14040-8 and 14040R-8 are NHRA Legal for Stock & Super Stock



Ford GT Powered by 5.4L Supercharged Modular Engine with Manley H-Beam Steel Connecting Rods

Ford 5.4L Modular V-8/5.8L GT-500

Pro Series I-Beam Rods



- ▶ Forged from 4340 or 300M aircraft quality vacuum degassed material
- ▶ Fully machined to produce the lightest and strongest rod possible
- ▶ Shot peened after machining to MIL spec and 100% individually magnafluxed
- ▶ Cap fasteners are 7/16" ARP 2000 or optional ARP 625+ cap screws
- ▶ Flywheel horsepower range for the Lightweight rods is 750+ HP - Oval Track, 800+ HP - Drag Race, for the Standard Weight rod is 900+ HP - Oval Track, 1200+ HP - Drag Race, and for the 300M rod is 1200+ HP - Oval track, 1500+ HP - Drag Race



Horsepower range could be exceeded depending upon rpm, stroke, piston weight and power adders

ARP 2000 Part No.	ARP 625+ Part No.	Description	Center-to-Center	Big End Bore	Big End Width	Pin End Width	Pin Bore	Avg. Gram Weight
14319-8	-----	Stock Length w/ 22mm pin	LIGHTWEIGHT 6.657"	2.239"	.940"	.940"	.8671"	620
14321-8	14321R6-8	Stock Length w/ 22mm pin Heavier beam for forced induction applications	STANDARD WEIGHT 6.657"	2.239"	.940"	.940"	.8671"	725
15321-8	15321R6-8	Stock Length w/ 22mm pin Heavier beam for forced induction applications	300M ALLOY 6.657"	2.239"	.940"	.940"	.8671"	750

P/N 14319, 14321, and 15321 will also work for the 6.8L V10 modular

Replacement Parts

Part No.	Quantity	Description
42390-4	4 pcs.	7/16" ARP 2000 Cap Screws
42252-4	4 pcs.	7/16" ARP 625+ Cap Screws
42302-8	8 pcs.	Ampco Pin Bushings
42392-16	16 pcs.	Dowel Bushings 7/16"
40170	1 pc.	Rod Bolt Assembly Lube



P/N 14319-8 is NHRA Legal for Stock & Super Stock



John Mihovetz

STEEL CONNECTING RODS

Ford 5.0L DOHC "Coyote" V-8

H-Beam & H-Tuff Series Rods

- ▶ Manufactured from 4340 forgings
- ▶ Heat treated, stress relieved, shot peened and 100% magnafluxed
- ▶ Weight matched sets ± 1.5 grams
- ▶ Cap fasteners are 3/8" ARP 8740 or optional ARP 2000 with the H-Beams and 3/8" ARP 2000 come standard with the H-Tuff
- ▶ Flywheel horsepower range for these rods is 700 HP (ARP 8740), 750+ HP (ARP 2000) for the H-Beams and 1,000+ HP for the H-Tuff



Horsepower range could be exceeded depending upon rpm, stroke, piston weight and power adders

ARP 8740 Part No.	ARP 2000 Part No.	Description	Center-to-Center	Big End Bore	Big End Width	Pin End Width	Pin Bore	Avg. Gram Weight
14042-8	14042R-8	Stock Length w/ 22mm pin	H-BEAM 5.933"	2.239"	.940"	.940"	.8671"	615
-----	15042R-8*	4.6 L Stock Length w/ 22mm pin	H-TUFF 5.933"	2.239"	.940"	.940"	.8671"	685

*H-Tuff Series rod information can be found on page 154



P/Ns 14042-8 and 14042R-8 are NHRA Legal for Stock & Super Stock

Replacement Parts

Part No.	Quantity	Description
42383-4	4 pcs.	3/8" ARP 8740 Cap Screws
42350-4	4 pcs.	3/8" ARP 2000 Cap Screws
42302-8	8 pcs.	Ampco Pin Bushings
42274-16	16 pcs.	Dowel Bushings 3/8"



P/N 14318 is NHRA Legal for Stock & Super Stock

Pro Series I-Beam Rods

- ▶ Forged from 4340 or 300M aircraft quality vacuum degassed material
- ▶ Fully machined to produce the lightest and strongest rod possible
- ▶ Shot peened after machining to MIL spec and 100% individually magnafluxed
- ▶ Cap fasteners are 7/16" ARP 2000 or optional ARP 625+ cap screws
- ▶ Flywheel horsepower range for the Lightweight rods is 750+ HP - Oval Track, 800+ HP - Drag Race, for the Standard Weight rod is 900+ HP - Oval Track, 1200+ HP - Drag Race, and for the 300M rod is 900+ HP - Oval track, 1200+ HP - Drag Race



Horsepower range could be exceeded depending upon rpm, stroke, piston weight and power adders

ARP 2000 Part No.	ARP 625+ Part No.	Description	Center-to-Center	Big End Bore	Big End Width	Pin End Width	Pin Bore	Avg. Gram Weight
14318-8	-----	Stock Length w/ 22mm pin	LIGHTWEIGHT 5.933"	2.239"	.940"	.940"	.8671"	595
14518-8	14518R6-8	Stock Length w/ 22mm pin Heavier beam for forced induction applications	STANDARD WEIGHT 5.933"	2.239"	.940"	.940"	.8671"	675
15318-8	15318R6-8	Stock Length w/ 22mm pin	300M ALLOY 5.933"	2.239"	.940"	.940"	.8671"	695

Replacement Parts

Part No.	Quantity	Description
42390-4	4 pcs.	7/16" ARP 2000 Cap Screws
42252-4	4 pcs.	7/16" ARP 625+ Cap Screws
42302-8	8 pcs.	Ampco Pin Bushings
42392-16	16 pcs.	Dowel Bushings 7/16"
40170	1 pc.	Rod Bolt Assembly Lube

Ford 5.2L DOHC “Voodoo/Aluminator XS” V-8 Shelby GT350/GT350R Mustang (2015-up) & Aluminator XS Crate Engine H-Beam Rods

- ▶ Manufactured from 4340 forgings
- ▶ Heat treated, stress relieved, shot peened and 100% magnafluxed
- ▶ Weight matched sets ± 1.5 grams
- ▶ Cap fasteners are 3/8” ARP 8740 or optional ARP 2000 cap screws
- ▶ Horsepower range for these rods is 700 HP (ARP 8740), 750+ HP (ARP 2000)



Horsepower range could be exceeded depending upon rpm, stroke, piston weight and power adders

ARP 8740 Part No.	ARP 2000 Part No.	Description	Center-to-Center	Big End Bore	Big End Width	Pin End Width	Pin Bore	Avg. Gram Weight
14043-8	14043R-8	Stock Length w/ 21mm pin	5.933”	2.239”	.940”	.471” Top .940” Bottom Trapezoidal Profile	.8281”	605

Replacement Parts

Part No.	Quantity	Description
42383-4	4 pcs.	3/8” ARP 8740 Cap Screws
42350-4	4 pcs.	3/8” ARP 2000 Cap Screws
42274-16	16 pcs.	Dowel Bushings 3/8”

Ford 6.2L SOHC “Raptor” V-8 Pro Series I-Beam Rods Lightweight

- ▶ Forged from 4340 aircraft quality vacuum degassed material
- ▶ Fully machined to produce the lightest and strongest rod possible
- ▶ Shot peened after machining to MIL spec and 100% magnafluxed
- ▶ Cap fasteners are 7/16” ARP 2000 cap screws
- ▶ Flywheel horsepower range for these rods is 800+ HP



Horsepower range could be exceeded depending upon rpm, stroke, piston weight and power adders

Part No.	Description	Center-to-Center	Big End Bore	Big End Width	Pin End Width	Pin Bore	Avg. Gram Weight
14322-8	Stock Length w/ .927” pin	6.200”	2.239”	.978”	.978”	.9281”	640

Replacement Parts

Part No.	Quantity	Description
42390-4	4 pcs.	7/16” ARP 2000 Cap Screws
42307-8	8 pcs.	Ampco Pin Bushings
42392-16	16 pcs.	Dowel Bushings 7/16”
40170	1 pc.	Rod Bolt Assembly Lube

STEEL CONNECTING RODS

Ford 7.3L Powerstroke Diesel

Pro Series I-Beam Rods

- ▶ Manufactured from 4340 forgings
- ▶ Fully machined to provide the correct balance of strength and weight
- ▶ Shot peened after machining to MIL spec and 100% individually magnafluxed
- ▶ Cap fasteners are 7/16" ARP 2000
- ▶ AMPCO 45 wrist pin bushings resist deformation at high cylinder pressures



ARP 2000 Part No.	Description	Center-to-Center	Big End Bore	Big End Width	Pin End Width	Pin Bore	Avg. Gram Weight
14161-8	Stock Length w/ Stock pin	7.128"	2.691"	1.231"	1.172"	1.309"	1420

Replacement Parts

Part No.	Quantity	Description
42391-4	4 pcs.	7/16" ARP 2000 Cap Screws
42233-4	4 pcs.	Ampco Pin Bushings
42387-16	16 pcs.	Dowel Bushings 7/16"
40170	1 pc.	Rod Bolt Assembly Lube

GM 6.6L Duramax Diesel

Pro Series I-Beam Rods

- ▶ Manufactured from 4340 forgings
- ▶ Fully machined to provide the correct balance of strength and weight
- ▶ Shot peened after machining to MIL spec and 100% individually magnafluxed
- ▶ Cap fasteners are 7/16" ARP 2000
- ▶ AMPCO 45 wrist pin bushings resist deformation at high cylinder pressures



ARP 2000 Part No.	Description	Center-to-Center	Big End Bore	Big End Width	Pin End Width	Pin Bore	Avg. Gram Weight
14163-8*	Stock Length w/ Stock pin	6.417"	2.6374"	1.117"	1.280" Top 1.535" Bottom Trapezoidal Profile	1.359"	1130

* Must use Clevite® CB1805 rod bearings or equivalent

Replacement Parts

Part No.	Quantity	Description
42384-4	4 pcs.	7/16" ARP 2000 Cap Screws
42234-4	4 pcs.	Ampco Pin Bushings
42392-16	16 pcs.	Dowel Bushings 7/16"
40170	1 pc.	Rod Bolt Assembly Lube

Toyota 5.7L 3UR-FE (2007-Up)

Pro Series I-Beam Rods

- ▶ Forged from 4340 aircraft quality vacuum degassed material
 - ▶ Fully machined to produce the lightest and strongest rod possible
 - ▶ Shot peened after machining to MIL spec and 100% magnafluxed
 - ▶ Cap fasteners are 7/16" ARP 2000 cap screws
 - ▶ Flywheel horsepower range for these rods is 1000+ HP
- Horsepower range could be exceeded depending upon rpm, stroke, piston weight and power adders



Part No.	Description	Center-to-Center	Big End Bore	Big End Width	Pin End Width	Pin Bore	Avg. Gram Weight
14425-8	Stock Length w/ Stock pin	6.476"	2.323"	.820"	.955"	.8671"	675

Replacement Parts

Part No.	Quantity	Description
42384-4	4 pcs.	7/16" ARP 2000 Cap Screws
42183-8	8 pcs.	Ampco Pin Bushings
42392-16	16 pcs.	Dowel Bushings 7/16"
40170	1 pc.	Rod Bolt Assembly Lube

Note: New part numbers are **BOLD & ITALICIZED**

STEEL CONNECTING RODS

H-Beam & H-Tuff Rods

Replacement Bolts and Specifications

Connecting Rod Part No.	Bolt Part No.	Recommended Torque w/ 30wt. Oil	Recommended Bolt Stretch w/ 30wt. Oil	Connecting Rod Part No.	Bolt Part No.	Recommended Torque w/ 30wt. Oil	Recommended Bolt Stretch w/ 30wt. Oil
14031-8	42350-1	60 ft./lbs.	.0058"-.0062"	-----	-----	-----	-----
14033-8	42350-1	60 ft./lbs.	.0058"-.0062"	-----	-----	-----	-----
14034-8	42350-1	60 ft./lbs.	.0058"-.0062"	-----	-----	-----	-----
-----	-----	-----	-----	-----	-----	-----	-----
14037-8	42350-1	60 ft./lbs.	.0058"-.0062"	-----	-----	-----	-----
14040-8	42383-1	55 ft./lbs.	.0047"-.0052"	14040R-8	42350-1	60 ft./lbs.	.0058"-.0062"
14042-8	42383-1	55 ft./lbs.	.0047"-.0052"	14042R-8	42350-1	60 ft./lbs.	.0058"-.0062"
14043-8	42383-1	55 ft./lbs.	.0047"-.0052"	14043R-8	42350-1	60 ft./lbs.	.0058"-.0062"
14044-8	42383-1	55 ft./lbs.	.0047"-.0052"	14044R-8	42350-1	60 ft./lbs.	.0058"-.0062"
14050-8	42354-1	95 ft./lbs.	.0050"-.0054"	14050R-8	42390-1	90 ft./lbs.	.0050"-.0060"
14051-8	42354-1	95 ft./lbs.	.0050"-.0054"	14051R-8	42390-1	90 ft./lbs.	.0050"-.0060"
14053-8	42354-1	95 ft./lbs.	.0050"-.0054"	14053R-8	42390-1	90 ft./lbs.	.0050"-.0060"
14054-8	42354-1	95 ft./lbs.	.0050"-.0054"	14054R-8	42390-1	90 ft./lbs.	.0050"-.0060"
14055-8	42354-1	95 ft./lbs.	.0050"-.0054"	14055R-8	42390-1	90 ft./lbs.	.0050"-.0060"
14056-8	42354-1	95 ft./lbs.	.0050"-.0054"	14056R-8	42390-1	90 ft./lbs.	.0050"-.0060"
-----	-----	-----	-----	14057R-8	42390-1	90 ft./lbs.	.0050"-.0060"
14060-8	42361-1	80 ft./lbs.	.0052"-.0056"	14060R-8	42249-1	95 ft./lbs.	.0060"-.0065"
14062-8	42361-1	80 ft./lbs.	.0052"-.0056"	14062R-8	42249-1	95 ft./lbs.	.0060"-.0065"
14064-8	42354-1	95 ft./lbs.	.0050"-.0054"	14064R-8	42390-1	90 ft./lbs.	.0050"-.0060"
14065-8	42354-1	95 ft./lbs.	.0050"-.0054"	14065R-8	42390-1	90 ft./lbs.	.0050"-.0060"
14066-8	42361-1	80 ft./lbs.	.0052"-.0056"	14066R-8	42249-1	95 ft./lbs.	.0060"-.0065"
14067-8	42354-1	95 ft./lbs.	.0050"-.0054"	14067R-8	42390-1	90 ft./lbs.	.0050"-.0060"
14069-8	42354-1	95 ft./lbs.	.0050"-.0054"	14069R-8	42390-1	90 ft./lbs.	.0050"-.0060"
14072-8	42361-1	80 ft./lbs.	.0052"-.0056"	14072R-8	42249-1	95 ft./lbs.	.0060"-.0065"
14073-8	42361-1	80 ft./lbs.	.0052"-.0056"	14073R-8	42249-1	95 ft./lbs.	.0060"-.0065"
14081-4	42350-1	60 ft./lbs.	.0058"-.0062"	-----	-----	-----	-----
14082-6	42361-1	80 ft./lbs.	.0052"-.0056"	14082R-6	42249-1	95 ft./lbs.	.0060"-.0065"
14083-10	42354-1	95 ft./lbs.	.0050"-.0054"	14083R-10	42390-1	90 ft./lbs.	.0050"-.0060"
14085-8	42354-1	95 ft./lbs.	.0050"-.0054"	14085R-8	42390-1	90 ft./lbs.	.0050"-.0060"
14086-8	42354-1	95 ft./lbs.	.0050"-.0054"	14086R-8	42390-1	90 ft./lbs.	.0050"-.0060"
14087-8	42354-1	95 ft./lbs.	.0050"-.0054"	14087R-8	42390-1	90 ft./lbs.	.0050"-.0060"
14088-8	42354-1	95 ft./lbs.	.0050"-.0054"	14088R-8	42390-1	90 ft./lbs.	.0050"-.0060"
14089-8	42354-1	95 ft./lbs.	.0050"-.0054"	14089R-8	42390-1	90 ft./lbs.	.0050"-.0060"
-----	-----	-----	-----	15042R-8	42350-1	60 ft./lbs.	.0058"-.0062"
-----	-----	-----	-----	15051R-8	42390-1	90 ft./lbs.	.0050"-.0060"
-----	-----	-----	-----	15053R-8	42390-1	90 ft./lbs.	.0050"-.0060"
-----	-----	-----	-----	15056R-8	42390-1	90 ft./lbs.	.0050"-.0060"
-----	-----	-----	-----	15057R-8	42390-1	90 ft./lbs.	.0050"-.0060"
-----	-----	-----	-----	15088R-8	42390-1	90 ft./lbs.	.0050"-.0060"
-----	-----	-----	-----	15089R-8	42390-1	90 ft./lbs.	.0050"-.0060"

Sportsmaster Rods

Replacement Bolts and Specifications

Connecting Rod Part No.	Bolt Part No.	Recommended Torque w/ 30wt. Oil	Recommended Bolt Stretch w/ 30wt. Oil	Connecting Rod Part No.	Bolt Part No.	Recommended Torque w/ 30wt. Oil	Recommended Bolt Stretch w/ 30wt. Oil
14101-8	42383-1	55 ft./lbs.	.0047"-.0052"	-----	-----	-----	-----
14101ACHA-8	42383-1	55 ft./lbs.	.0047"-.0052"	-----	-----	-----	-----
14101SMS-8	42383-1	55 ft./lbs.	.0047"-.0052"	14101SMSR-8	42350-1	60 ft./lbs.	.0058-.0062"
14103-8	42383-1	55 ft./lbs.	.0047"-.0052"	-----	-----	-----	-----
14104-8	42383-1	55 ft./lbs.	.0047"-.0052"	-----	-----	-----	-----
14105-8	42383-1	55 ft./lbs.	.0047"-.0052"	-----	-----	-----	-----
14106-8	42383-1	55 ft./lbs.	.0047"-.0052"	-----	-----	-----	-----
14107-8	42383-1	55 ft./lbs.	.0047"-.0052"	-----	-----	-----	-----
14108-8	42383-1	55 ft./lbs.	.0047"-.0052"	-----	-----	-----	-----
14109-8	42383-1	55 ft./lbs.	.0047"-.0052"	-----	-----	-----	-----
14109A-8	42383-1	55 ft./lbs.	.0047"-.0052"	-----	-----	-----	-----
14112-8	42383-1	55 ft./lbs.	.0047"-.0052"	-----	-----	-----	-----
14112A-8	42383-1	55 ft./lbs.	.0047"-.0052"	-----	-----	-----	-----
14113-8	42383-1	55 ft./lbs.	.0047"-.0052"	-----	-----	-----	-----
14114-8	42383-1	55 ft./lbs.	.0047"-.0052"	-----	-----	-----	-----
14116-8	42383-1	55 ft./lbs.	.0047"-.0052"	-----	-----	-----	-----
14117-4	42383-1	55 ft./lbs.	.0047"-.0052"	-----	-----	-----	-----
14139C-8	42383-1	55 ft./lbs.	.0047"-.0052"	-----	-----	-----	-----

STEEL CONNECTING RODS

Pro Series I-Beam Rods

Replacement Bolts and Specifications

Connecting Rod Part No.	Bolt Part No.	Recommended Torque w/ ARP Lube	Recommended Bolt Stretch w/ ARP Lube	Connecting Rod Part No.	Bolt Part No.	Recommended Torque w/ ARP Lube	Recommended Bolt Stretch w/ ARP Lube
14140-8	42351-1	60 ft./lbs.	.0058"-.0062"	14140R6-8	42321-1	65 ft./lbs.	.0065"-.0075"
14142-8	42351-1	60 ft./lbs.	.0058"-.0062"	14142R6-8	42321-1	65 ft./lbs.	.0065"-.0075"
14144-8	42351-1	60 ft./lbs.	.0058"-.0062"	14144R6-8	42321-1	65 ft./lbs.	.0065"-.0075"
14145-8	42351-1	60 ft./lbs.	.0058"-.0062"	14145R6-8	42321-1	65 ft./lbs.	.0065"-.0075"
14152-8	42390-1	80 ft./lbs.	.0050"-.0060"	14152R6-8	42252-1	105 ft./lbs.	.0060"-.0065"
14154-8	42390-1	80 ft./lbs.	.0050"-.0060"	14154R6-8	42252-1	105 ft./lbs.	.0060"-.0065"
14155-8	42390-1	80 ft./lbs.	.0050"-.0060"	14155R6-8	42252-1	105 ft./lbs.	.0060"-.0065"
14157-8	42390-1	80 ft./lbs.	.0050"-.0060"	14157R6-8	42252-1	105 ft./lbs.	.0060"-.0065"
14160-8	42384-1	100 ft./lbs.	.0064"-.0068"	14160L-8	42296-1	95 ft./lbs.	.0065"-.0070"
14161-8	42391-1	100 ft./lbs.	.0069"-.0073"	-----	-----	-----	-----
14162-8	42384-1	100 ft./lbs.	.0064"-.0068"	14162L-8	42296-1	95 ft./lbs.	.0065"-.0070"
14163-8	42384-1	100 ft./lbs.	.0064"-.0068"	-----	-----	-----	-----
14166-8	42384-1	100 ft./lbs.	.0064"-.0068"	14166L-8	42296-1	95 ft./lbs.	.0065"-.0070"
14167-8	42384-1	100 ft./lbs.	.0064"-.0068"	14167L-8	42296-1	95 ft./lbs.	.0065"-.0070"
14168-8	42384-1	100 ft./lbs.	.0064"-.0068"	14168L-8	42296-1	95 ft./lbs.	.0065"-.0070"
14170-8	42384-1	100 ft./lbs.	.0064"-.0068"	14170L-8	42296-1	95 ft./lbs.	.0065"-.0070"
14172-8	42384-1	100 ft./lbs.	.0064"-.0068"	14172L-8	42296-1	95 ft./lbs.	.0065"-.0070"
14173-8	42384-1	100 ft./lbs.	.0064"-.0068"	14173L-8	42296-1	95 ft./lbs.	.0065"-.0070"
14175-8	42384-1	100 ft./lbs.	.0064"-.0068"	14175L-8	42296-1	95 ft./lbs.	.0065"-.0070"
14177-8	42391-1	100 ft./lbs.	.0069"-.0073"	14177R6-8	42397-1	100 ft./lbs.	.0068"-.0072"
14185-8	42391-1	100 ft./lbs.	.0069"-.0073"	14185R6-8	42397-1	100 ft./lbs.	.0068"-.0072"
14187-8	42391-1	100 ft./lbs.	.0069"-.0073"	14187R6-8	42397-1	100 ft./lbs.	.0068"-.0072"
14240-8	42351-1	60 ft./lbs.	.0058"-.0062"	14240R6-8	42321-1	65 ft./lbs.	.0065"-.0075"
14242-8	42351-1	60 ft./lbs.	.0058"-.0062"	14242R6-8	42321-1	65 ft./lbs.	.0065"-.0075"
14244-8	42351-1	60 ft./lbs.	.0058"-.0062"	14244R6-8	42321-1	65 ft./lbs.	.0065"-.0075"
14245-8	42351-1	60 ft./lbs.	.0058"-.0062"	14245R6-8	42321-1	65 ft./lbs.	.0065"-.0075"
14254-8	42390-1	80 ft./lbs.	.0050"-.0060"	14254R6-8	42252-1	105 ft./lbs.	.0060"-.0065"
14255-8	42390-1	80 ft./lbs.	.0050"-.0060"	14255R6-8	42252-1	105 ft./lbs.	.0060"-.0065"
14266-8	42390-1	80 ft./lbs.	.0050"-.0060"	14266R6-8	42252-1	105 ft./lbs.	.0060"-.0065"
14318-8	42390-1	80 ft./lbs.	.0050"-.0060"	14318R6-8	42252-1	105 ft./lbs.	.0060"-.0065"
14319-8	42390-1	80 ft./lbs.	.0050"-.0060"	14319R6-8	42252-1	105 ft./lbs.	.0060"-.0065"
14320-8	42390-1	80 ft./lbs.	.0050"-.0060"	14320R6-8	42252-1	105 ft./lbs.	.0060"-.0065"
14321-8	42390-1	80 ft./lbs.	.0050"-.0060"	14321R6-8	42252-1	105 ft./lbs.	.0060"-.0065"
14322-8	42390-1	80 ft./lbs.	.0050"-.0060"	14322R6-8	42252-1	105 ft./lbs.	.0060"-.0065"
14339-8	42351-1	60 ft./lbs.	.0058"-.0062"	14339R6-8	42321-1	65 ft./lbs.	.0065"-.0075"
14340-8	42351-1	60 ft./lbs.	.0058"-.0062"	14340R6-8	42321-1	65 ft./lbs.	.0065"-.0075"
14344-8	42351-1	60 ft./lbs.	.0058"-.0062"	14344R6-8	42321-1	65 ft./lbs.	.0065"-.0075"
14345-8	42351-1	60 ft./lbs.	.0058"-.0062"	14345R6-8	42321-1	65 ft./lbs.	.0065"-.0075"

CONNECTING RODS

Manley Lube Part No.	Quantity	Description
40170	1 oz.	ARP Ultra - Torque Fastener® Assembly Lube

Important excerpt from the ARP catalog regarding proper fastener installation:

"The importance of tightening fasteners to their required preload cannot be emphasized enough. If a fastener is not tightened properly, the fastener will not apply the required preload on the application it is being used for and may become susceptible to failure. Conversely, if a fastener is over tightened and stretched too much, it becomes susceptible to failure by exceeding it's maximum yield point."



Manley Performance uses ARP connecting rod bolts exclusively and is proud to be an ARP "Performance Partner."

Note: New part numbers are **BOLD & ITALICIZED**

STEEL CONNECTING RODS

Pro Series I-Beam Rods

Replacement Bolts and Specifications

Connecting Rod Part No.	Bolt Part No.	Recommended Torque w/ ARP Lube	Recommended Bolt Stretch w/ ARP Lube	Connecting Rod Part No.	Bolt Part No.	Recommended Torque w/ ARP Lube	Recommended Bolt Stretch w/ ARP Lube
14350-8	42390-1	80 ft./lbs.	.0050"-.0060"	14350R6-8	42252-1	105 ft./lbs.	.0060"-.0065"
14352-8	42390-1	80 ft./lbs.	.0050"-.0060"	14352R6-8	42252-1	105 ft./lbs.	.0060"-.0065"
14354-8	42390-1	80 ft./lbs.	.0050"-.0060"	14354R6-8	42252-1	105 ft./lbs.	.0060"-.0065"
14355-8	42390-1	80 ft./lbs.	.0050"-.0060"	14355R6-8	42252-1	105 ft./lbs.	.0060"-.0065"
14359-8	42390-1	80 ft./lbs.	.0050"-.0060"	14359R6-8	42252-1	105 ft./lbs.	.0060"-.0065"
14364-8	42390-1	80 ft./lbs.	.0050"-.0060"	14364R6-8	42252-1	105 ft./lbs.	.0060"-.0065"
14365-8	42390-1	80 ft./lbs.	.0050"-.0060"	14365R6-8	42252-1	105 ft./lbs.	.0060"-.0065"
14369-8	42390-1	80 ft./lbs.	.0050"-.0060"	14369R6-8	42252-1	105 ft./lbs.	.0060"-.0065"
14425-8	42384-1	100 ft./lbs.	.0064"-.0068"	-----	-----	-----	-----
14438-8	42351-1	60 ft./lbs.	.0058"-.0062"	-----	-----	-----	-----
14439-8	42350-1	60 ft./lbs.	.0058"-.0062"	-----	-----	-----	-----
14440-8	42350-1	60 ft./lbs.	.0058"-.0062"	-----	-----	-----	-----
14441-8	42350-1	60 ft./lbs.	.0058"-.0062"	-----	-----	-----	-----
14442-8	42350-1	60 ft./lbs.	.0058"-.0062"	-----	-----	-----	-----
14443-8	42351-1	60 ft./lbs.	.0058"-.0062"	-----	-----	-----	-----
14445-8	42350-1	60 ft./lbs.	.0058"-.0062"	-----	-----	-----	-----
14450-8	42390-1	80 ft./lbs.	.0050"-.0060"	14450R6-8	42252-1	105 ft./lbs.	.0060"-.0065"
14452-8	42390-1	80 ft./lbs.	.0050"-.0060"	14452R6-8	42252-1	105 ft./lbs.	.0060"-.0065"
14454-8	42390-1	80 ft./lbs.	.0050"-.0060"	14454R6-8	42252-1	105 ft./lbs.	.0060"-.0065"
14455-8	42390-1	80 ft./lbs.	.0050"-.0060"	14455R6-8	42252-1	105 ft./lbs.	.0060"-.0065"
14460-8	42390-1	80 ft./lbs.	.0050"-.0060"	14460R6-8	42252-1	105 ft./lbs.	.0060"-.0065"
14461-8	42390-1	80 ft./lbs.	.0050"-.0060"	14461R6-8	42252-1	105 ft./lbs.	.0060"-.0065"
14463-10	42390-1	80 ft./lbs.	.0050"-.0060"	14463R6-10	42252-1	105 ft./lbs.	.0060"-.0065"
14518-8	42390-1	80 ft./lbs.	.0050"-.0060"	14518R6-8	42252-1	105 ft./lbs.	.0060"-.0065"
14520-8	42390-1	80 ft./lbs.	.0050"-.0060"	14520R6-8	42252-1	105 ft./lbs.	.0060"-.0065"
15321-8	42390-1	80 ft./lbs.	.0050"-.0060"	15321R6-8	42252-1	105 ft./lbs.	.0060"-.0065"
15359-8	42390-1	80 ft./lbs.	.0050"-.0060"	15359R6-8	42252-1	105 ft./lbs.	.0060"-.0065"
14523-6	42390-1	80 ft./lbs.	.0050"-.0060"	14523R6-6	42252-1	105 ft./lbs.	.0060"-.0065"
14554-8	42390-1	80 ft./lbs.	.0050"-.0060"	14554R6-8	42252-1	105 ft./lbs.	.0060"-.0065"
14559-8	42390-1	80 ft./lbs.	.0050"-.0060"	14559R6-8	42252-1	105 ft./lbs.	.0060"-.0065"
14560-8	42390-1	80 ft./lbs.	.0050"-.0060"	14560R6-8	42252-1	105 ft./lbs.	.0060"-.0065"
14562-8	42390-1	80 ft./lbs.	.0050"-.0060"	14562R6-8	42252-1	105 ft./lbs.	.0060"-.0065"
14563-10	42390-1	80 ft./lbs.	.0050"-.0060"	14563R6-10	42252-1	105 ft./lbs.	.0060"-.0065"
15318-8	42390-1	80 ft./lbs.	.0050"-.0060"	15318R6-8	42252-1	105 ft./lbs.	.0060"-.0065"
15320-8	42390-1	80 ft./lbs.	.0050"-.0060"	15320R6-8	42252-1	105 ft./lbs.	.0060"-.0065"
15321-8	42390-1	80 ft./lbs.	.0050"-.0060"	15321R6-8	42252-1	105 ft./lbs.	.0060"-.0065"
15559-8	42390-1	80 ft./lbs.	.0050"-.0060"	15559R6-8	42252-1	105 ft./lbs.	.0060"-.0065"

Manley Lube Part No.	Quantity	Description
40170	1 oz.	ARP Ultra - Torque Fastener® Assembly Lube

Important excerpt from the ARP catalog regarding proper fastener installation:

"The importance of tightening fasteners to their required preload cannot be emphasized enough. If a fastener is not tightened properly, the fastener will not apply the required preload on the application it is being used for and may become susceptible to failure. Conversely, if a fastener is over tightened and stretched too much, it becomes susceptible to failure by exceeding its maximum yield point."



Manley Performance uses ARP connecting rod bolts exclusively and is proud to be an ARP "Performance Partner."

Note: New part numbers are **BOLD & ITALICIZED**

STEEL CONNECTING RODS

Pin Bushings

► Premium AMPCO 18 material

Part No.	O.D.	I.D.	O/A Length
42273S-1	.904"	.735"	.780"
42286S-1	.904"	.735"	.845"
42273-1	.904"	.744"	.780"
42286-1	.904"	.744"	.845"
42187S-1	.850"	.775"	.795"
42035S-1	.850"	.775"	.895"
42054S-1	.850"	.775"	1.015"
42267S-1	.860"	.775"	.795"
42221S-1	.860"	.775"	.975"
42282S-1	.904"	.775"	.780"
42041S-1	.910"	.775"	.975"
42187-1	.850"	.784"	.795"
42035-1	.850"	.784"	.895"
42054-1	.850"	.784"	1.015"
42267-1	.860"	.784"	.795"
42221-1	.860"	.784"	.975"
42282-1	.904"	.784"	.780"
42041-1	.910"	.784"	.975"
42186S-1	.930"	.815"	.965"
42040S-1	.870"	.820"	.850"
42258S-1	.894"	.820"	1.015"
42285S-1	.904"	.820"	.845"
42181S-1	.910"	.820"	.845"
42185S-1	.910"	.820"	.950"
42303S-1	.910"	.820"	1.015"
42042S-1	.910"	.820"	1.025"
42040-1	.870"	.828"	.850"
42258-1	.894"	.828"	1.015"
42285-1	.904"	.828"	.845"
42181-1	.910"	.828"	.845"
42185-1	.910"	.828"	.950"
42303-1	.910"	.828"	1.015"
42042-1	.910"	.828"	1.025"
42186-1	.930"	.828"	.965"
42261S-1	.924"	.850"	.845"
42244S-1	.910"	.855"	.925"
42056S-1	.929"	.855"	.795"
42052S-1	.930"	.855"	.840"
42050S-1	.930"	.855"	1.010"
42043S-1	.930"	.855"	1.050"
42044S-1	.973"	.855"	.935"
42039S-1	.894"	.856"	1.015"
42182S-1	.910"	.856"	.845"
42183S-1	.910"	.856"	.950"
42319S-1	.930"	.856"	.775"
42184S-1	.930"	.856"	.815"
42399S-1	.990"	.856"	.970"
42345S-1	.990"	.856"	.995"
42325S-1	.910"	.860"	.795"
42323S-1	.910"	.860"	1.010"
42261-1	.924"	.860"	.845"
42260S-1	.952"	.860"	.935"
42302S-1	.990"	.860"	.935"
42039-1	.894"	.866"	1.015"
42325-1	.910"	.866"	.795"
42182-1	.910"	.866"	.845"
42244-1	.910"	.866"	.925"
42183-1	.910"	.866"	.950"
42323-1	.910"	.866"	1.010"
42056-1	.929"	.866"	.795"
42319-1	.930"	.866"	.775"
42184-1	.930"	.866"	.815"
42052-1	.930"	.866"	.840"
42050-1	.930"	.866"	1.010"

Part No.	O.D.	I.D.	O/A Length
42043-1	.930"	.866"	1.050"
42044-1	.973"	.866"	.935"
42399-1	.990"	.866"	.970"
42308S-1	.990"	.866"	.975"
42345-1	.990"	.866"	.995"
42268S-1	1.019"	.866"	.995"
42260-1	.952"	.867"	.935"
42302-1	.990"	.867"	.935"
42308-1	.990"	.877"	.975"
42268-1	1.019"	.877"	.995"
42055S-1	.967"	.895"	.835"
42314S-1	.979"	.896"	.995"
42309S-1	.964"	.900"	.835"
42051S-1	.964"	.900"	.855"
42053S-1	.990"	.900"	.850"
42314-1	.979"	.906"	.995"
42309-1	.964"	.908"	.835"
42051-1	.964"	.908"	.855"
42055-1	.967"	.908"	.835"
42053-1	.990"	.908"	.850"
42315S-1	.973"	.920"	1.050"
42045S-1	.975"	.920"	.975"
42395S-1	.990"	.920"	.945"
42310S-1	.990"	.920"	.975"
42393S-1	.990"	.920"	.995"
42304S-1	.990"	.920"	1.120"
42366S-1	.997"	.920"	.975"
42307S-1	1.019"	.920"	.995"
42306S-1	1.037"	.920"	.955"
42315-1	.973"	.929"	1.050"
42045-1	.975"	.929"	.975"
42395-1	.990"	.929"	.945"
42310-1	.990"	.929"	.975"
42393-1	.990"	.929"	.995"
42304-1	.990"	.929"	1.120"
42366-1	.997"	.929"	.975"
42307-1	1.019"	.929"	.995"
42306-1	1.037"	.929"	.955"
42046S-1	1.051"	.980"	1.125"
42259S-1	1.054"	.980"	.995"
42047S-1	1.160"	.980"	1.245"
42250S-1	1.041"	.982"	.985"
42394S-1	1.041"	.982"	1.055"
42298S-1	1.041"	.982"	1.075"
42327S-1	1.041"	.982"	1.125"
42305S-1	1.100"	.982"	1.175"
42381S-1	1.158"	.982"	1.245"
42250-1	1.041"	.992"	.985"
42394-1	1.041"	.992"	1.055"
42298-1	1.041"	.992"	1.075"
42327-1	1.041"	.992"	1.125"
42046-1	1.051"	.992"	1.125"
42259-1	1.054"	.992"	.995"
42305-1	1.100"	.992"	1.175"
42381-1	1.158"	.992"	1.245"
42047-1	1.160"	.992"	1.245"
42028S-1	1.100"	1.015"	.835"
42388S-1	1.100"	1.022"	1.175"
42028-1	1.100"	1.026"	.835"
42388-1	1.100"	1.033"	1.175"
42233S-1	1.424"	1.299"	1.167"
42233-1	1.424"	1.309"	1.167"
42234S-1	1.424"	1.350"	1.530"
42234-1	1.424"	1.359"	1.530"

CONNECTING RODS

STEEL CONNECTING RODS

Connecting Rod Bolts

Part No.	Diameter	Under Head Length	Material
42281-1	5/16"	1.500"	ARP 2000
42383-1	3/8"	1.500"	ARP 8740
42350-1	3/8"	1.500"	ARP 2000
42320-1	3/8"	1.500"	ARP 625+
42351-1	3/8"	1.600"	ARP 2000
42321-1	3/8"	1.600"	ARP 625+
42354-1	7/16"	1.450"	ARP 8740
42390-1	7/16"	1.450"	ARP 2000
42252-1	7/16"	1.450"	ARP 625+
42361-1	7/16"	1.600"	ARP 8740
42249-1	7/16"	1.600"	ARP 2000
42386-1	7/16"	1.650"	ARP 8740
42384-1	7/16"	1.650"	ARP 2000
42296-1	7/16"	1.650"	ARP L19
42396-1	7/16"	1.700"	ARP 2000
42397-1	7/16"	1.750"	ARP 625+
42239-1	7/16"	1.800"	ARP 8740
42391-1	7/16"	1.850"	ARP 2000

Dowel Bushings

Part No.	O.D.	I.D.	O/A Length
42280-1	.3710"	.3190"	.943"
42048-1	.4250"	.3860"	.536"
42274-1	.4390"	.3860"	.530"
42385-1	.4390"	.3860"	.815"
42382-1	.4390"	.3860"	.860"
42380-1	.4390"	.3860"	.900"
42398-1	.4390"	.3860"	.960"
42049-1	.5000"	.4440"	.536"
42352-1	.5020"	.4485"	.820"
42392-1	.5020"	.4485"	.855"
42387-1	.5020"	.4485"	1.015"

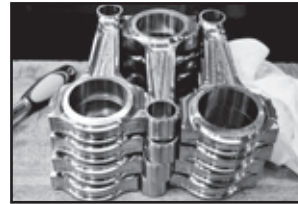
Manufacturing Processes



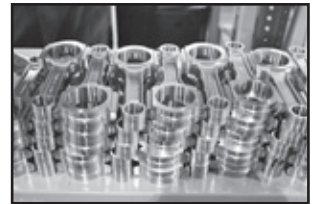
Bore & Profile



Bore & Profile



Post Bore & Profile



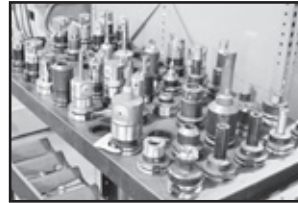
Post Bore & Profile



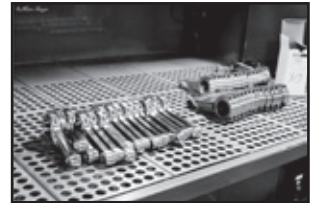
Drill & Tap



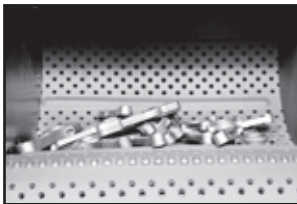
Final Bore



CNC Tooling



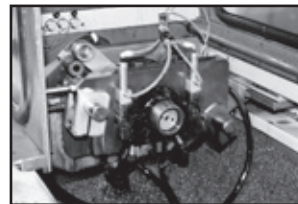
Rod Detailing



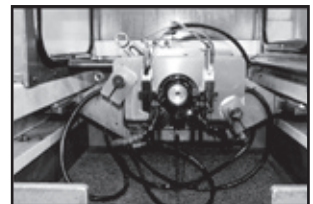
Shot Peen



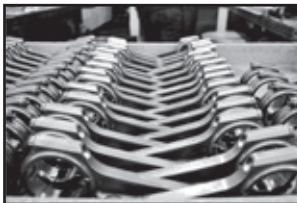
Magnaflux



Sunnen® H-Beam Cross Grinding



Sunnen® I-Beam Cross Grinding



Post Cross Grind



Sunnen® Pin Honing



Bushing Chamfering



Sunnen® Precision Gauging

CONNECTING RODS